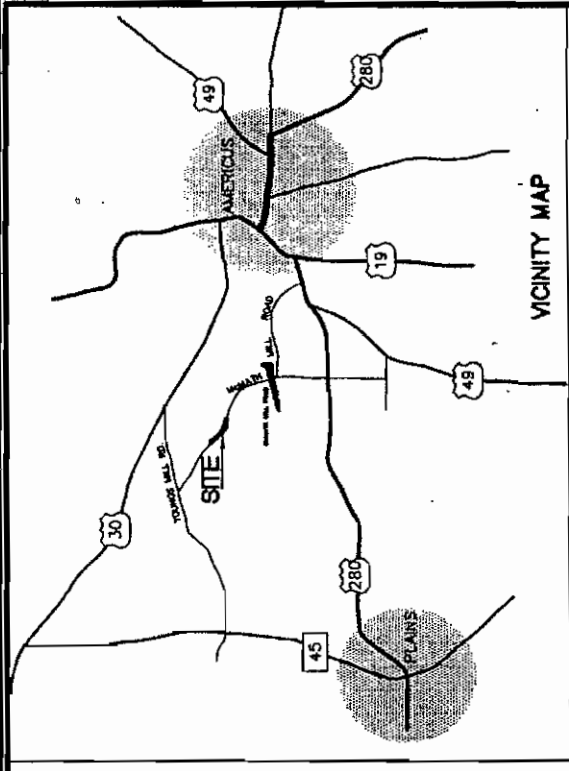
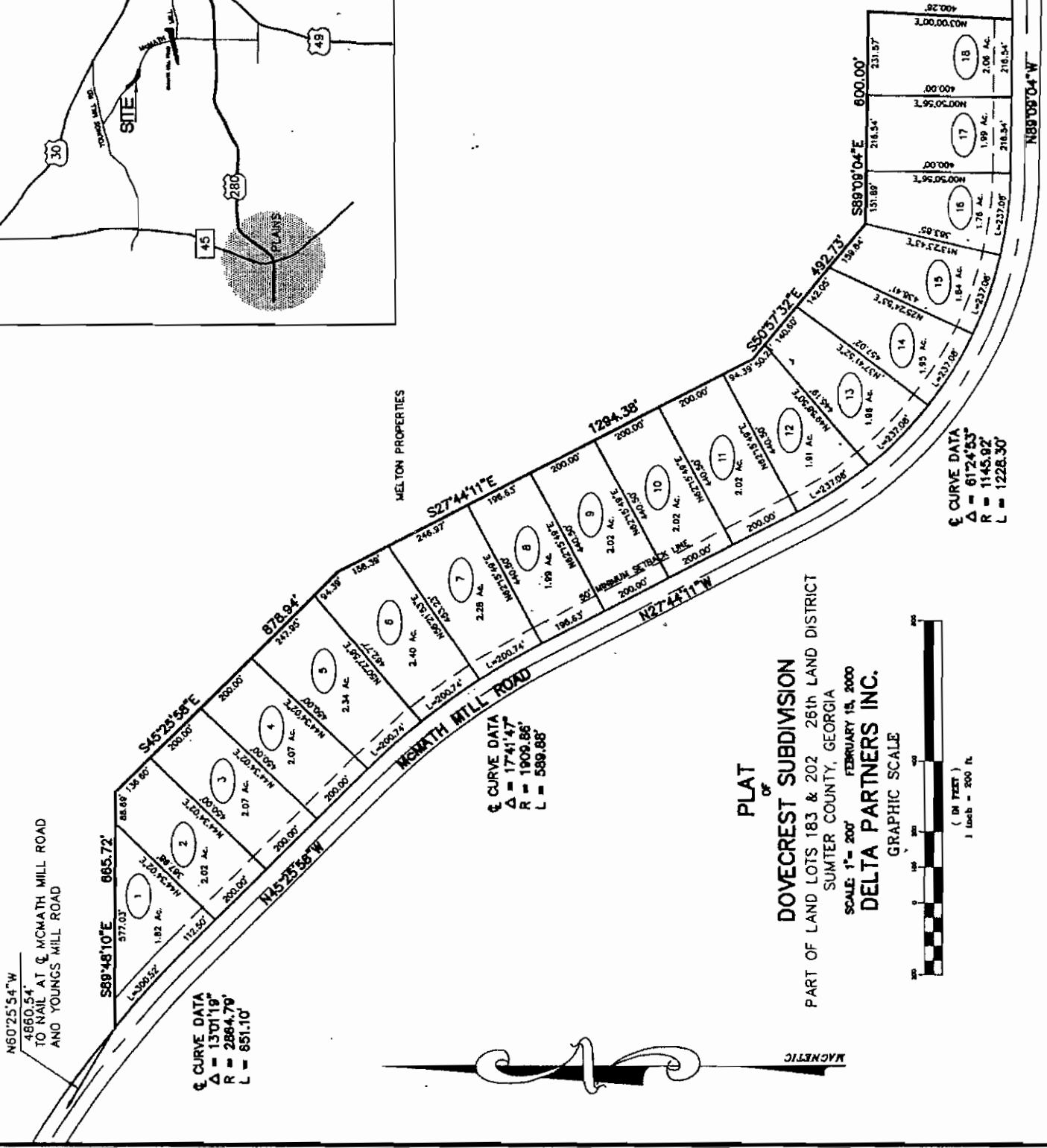


Recorded 2-13-00 Plat Cabinet C, Slide 41A



SEAL
 DELTA PARTNERS INC.
 P.O. BOX 48
 430 TIT AVENUE
 ALBANY, GEORGIA 31701
 PHONE: (912) 431-2230



PLAT OF
DOVECREST SUBDIVISION
 PART OF LAND LOTS 183 & 202 26th LAND DISTRICT
 SUMTER COUNTY, GEORGIA
 SCALE: 1" = 200'
 FEBRUARY 15, 2000
DELTA PARTNERS INC.
 GRAPHIC SCALE

