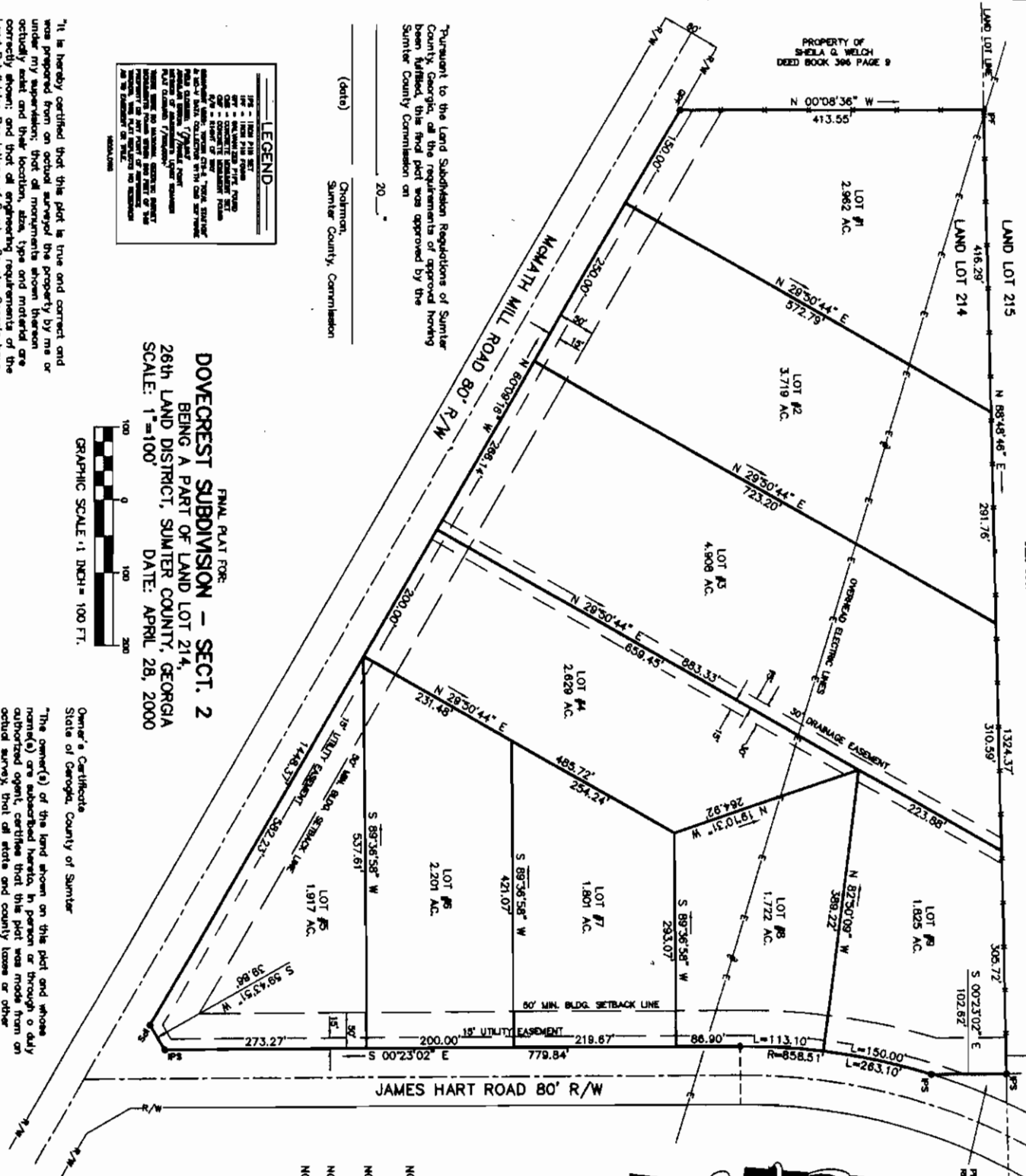
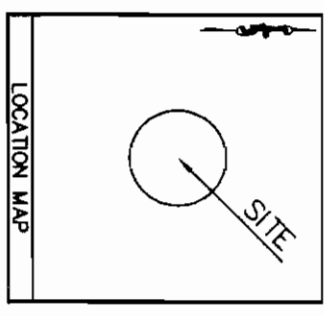


PROPERTY OF
CECIL E. ROYARDS, JR.
& WILLET JACQUE ROYARDS
DEED BOOK 170 PAGE 233



PROPERTY OF
ROBERTA TYLER
DB 301 PO 146
R-858.51
L=150.00
L=263.10



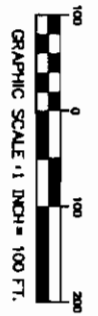
DOT PROJECT NO.
PEPR-196-2(201)

Pursuant to the Land Subdivision Regulations of Sumter County, Georgia, all the requirements of approved platting have been fulfilled, this plat was approved by the Sumter County Commission on _____ 20__.

(date) _____
Chairman,
Sumter County Commission

LEGEND	
1/8" = 100 FT.	1/8" = 100 FT.
1/4" = 200 FT.	1/4" = 200 FT.
1/2" = 400 FT.	1/2" = 400 FT.
3/4" = 600 FT.	3/4" = 600 FT.
1" = 800 FT.	1" = 800 FT.
1 1/4" = 1000 FT.	1 1/4" = 1000 FT.
1 1/2" = 1200 FT.	1 1/2" = 1200 FT.
1 3/4" = 1400 FT.	1 3/4" = 1400 FT.
2" = 1600 FT.	2" = 1600 FT.
2 1/4" = 1800 FT.	2 1/4" = 1800 FT.
2 1/2" = 2000 FT.	2 1/2" = 2000 FT.
2 3/4" = 2200 FT.	2 3/4" = 2200 FT.
3" = 2400 FT.	3" = 2400 FT.
3 1/4" = 2600 FT.	3 1/4" = 2600 FT.
3 1/2" = 2800 FT.	3 1/2" = 2800 FT.
3 3/4" = 3000 FT.	3 3/4" = 3000 FT.
4" = 3200 FT.	4" = 3200 FT.
4 1/4" = 3400 FT.	4 1/4" = 3400 FT.
4 1/2" = 3600 FT.	4 1/2" = 3600 FT.
4 3/4" = 3800 FT.	4 3/4" = 3800 FT.
5" = 4000 FT.	5" = 4000 FT.
5 1/4" = 4200 FT.	5 1/4" = 4200 FT.
5 1/2" = 4400 FT.	5 1/2" = 4400 FT.
5 3/4" = 4600 FT.	5 3/4" = 4600 FT.
6" = 4800 FT.	6" = 4800 FT.
6 1/4" = 5000 FT.	6 1/4" = 5000 FT.
6 1/2" = 5200 FT.	6 1/2" = 5200 FT.
6 3/4" = 5400 FT.	6 3/4" = 5400 FT.
7" = 5600 FT.	7" = 5600 FT.
7 1/4" = 5800 FT.	7 1/4" = 5800 FT.
7 1/2" = 6000 FT.	7 1/2" = 6000 FT.
7 3/4" = 6200 FT.	7 3/4" = 6200 FT.
8" = 6400 FT.	8" = 6400 FT.
8 1/4" = 6600 FT.	8 1/4" = 6600 FT.
8 1/2" = 6800 FT.	8 1/2" = 6800 FT.
8 3/4" = 7000 FT.	8 3/4" = 7000 FT.
9" = 7200 FT.	9" = 7200 FT.
9 1/4" = 7400 FT.	9 1/4" = 7400 FT.
9 1/2" = 7600 FT.	9 1/2" = 7600 FT.
9 3/4" = 7800 FT.	9 3/4" = 7800 FT.
10" = 8000 FT.	10" = 8000 FT.

FINAL PLAT FOR:
DOVECREST SUBDIVISION - SECT. 2
BEING A PART OF LAND LOT 214,
26th LAND DISTRICT, SUMTER COUNTY, GEORGIA
SCALE: 1"=100'
DATE: APRIL 28, 2000



"It is hereby certified that this plat is true and correct, and was prepared from an actual survey of the property by me or under my supervision; that all monuments shown hereon actually exist and that location, area, size and marked are correctly shown; and that all engineering requirements of the Land Subdivision Regulations of Sumter County, Georgia have been fully complied with."

By: Larry Burned Registered Georgia Land Surveyor No. 2834

Owner's Certificate
State of Georgia, County of Sumter

"The owner(s) of the land shown on this plat and whose name(s) are subscribed hereto, in person or through a duly authorized agent, certifies that this plat was made from an actual survey, that all state and county laws or other assessments now due on this land have been paid."

Agent: _____ Owner: _____
Date: _____ Date: _____

NOTE: IRON PINS (5/8" REBAR) TO BE SET ON ALL LOT CORNERS.

NOTE: INDIVIDUAL SEPTIC TANKS SHALL BE USED FOR SEWAGE DISPOSAL ON EACH LOT.

NOTE: INDIVIDUAL WELLS SHALL BE INSTALLED ON EACH LOT.
NOTE: THERE ARE NO PUBLIC WATER OR SEWER SYSTEMS WITHIN 1000 FEET OF THIS DEVELOPMENT.

TOTAL ACRES = 23.683
TOTAL # LOTS = 9

OWNER & DEVELOPER
DELTA PARTNERS, INC.
430 11FT AVENUE
P.O. BOX 46
ALBANY, GA. 31701
PHONE (912) 431-2235

ATLAS SURVEYING COMPANY
1927A LEDO ROAD
ALBANY, GA 31707
PHONE (912) 435-5170
FAX # (912) 435-2199
EMAIL: A202@ATLASSURVEYING.COM